

ACOUSTIC SAND PANELS

NOTES AND DETAILS

VER: SYB070112

Product introduction

The raw material of the Acoustic Sand Panel is natural silica sand, and the sand particles close to each other are aggregated into hard sandstone through the chemical bond between the silicon-based polymer and the sand surface. During the polymerization process, there are always a large number of pores between the sand, so it can form a good porous sound absorption.

Silica sand, the main component of silica, and silicon-based polymerization agent, the main component of pure silicon and silicate, are stable performance, environmentally friendly non-toxic natural inorganic materials, therefore, Acoustic Sand Panel with non-combustible, weather resistant, not soluble in water, sunlight resistance, environmental friendly, and seamless, is ideal for building indoor sound absorption use.

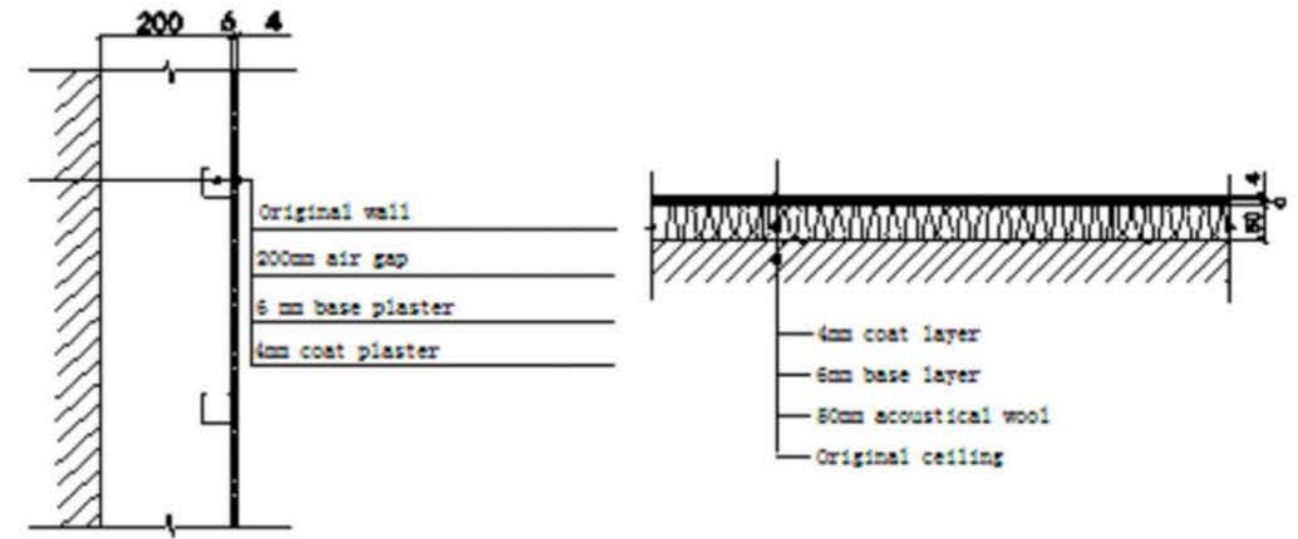
The coating layer of the material is also environmentally friendly sandstone, using a plastering or spraying method, covering the base layer panels, forming a large area seamless with sandstone fine texture of the interior decoration effect. Decorative surface of the sandstone material, the application of flexible silica sand modification technology, the formation of the surface layer with the appropriate flexibility, coupled with the material filled with pores, expand and contraction of hot and humid with self-adaptability, large area will not crack, continuous area can reach more than 2000m².

Acoustic sand panels can be designed large-scale seamless surface. Can also be made into a corrugated, round, curved, cascade, caission, internal and external corner, hyperboloid and other shapes of decorative effect.

Acoustic sand panels for theater, concert hall, performing art centers,

recording studio and other professional acoustic spaces.

Also suitable for classrooms, conference rooms, museums, exhibition halls, offices, business hall, reception room, auction room, waiting room, courtroom, library, gallery, fitness center, shopping center, hotel lobby, ward and all of the spaces need sound absorption to reduce the reverberation. Also suitable for factory shop, Mechanical room, elevator shaft, underground tunnels and other places need noise reduction.



Structure 1

Structure 2

	Item	Frequency (Hz)					
		125	250	500	1000	2000	4000
Structure 1	NRC 0.55	0.56	0.64	0.68	0.44	0.42	0.32
Structure 2	NRC 0.80	0.44	0.91	0.87	0.72	0.61	0.68

Product instruction				No.	SYB
Design	Check	Approval		Page	01

Technique parameters

Physical parameters of acoustical sand panels are shown in the chart below.

Item		Test Result	National requirements	Remark
Thickness	Substrate	6mm	/	<p>Materials are divided into substrate and coat layer, the substrate is plate-like, through the frame fixed to the wall or ceiling. The coat layer is mortar-like, applied to the outer surface of the substrate by troweling or spraying, and dried to form a continuous, seamless, hard surface. Both the substrate and the coat layer are sandstone materials, rich in porosity (porosity up to 45% -50%).</p> <p>The chemical bond of the polymer is very strong, and the strength of the sand is very high, and its compressive strength is close to that of C30 concrete. And the crack strength, impact strength and nail holding force are better than the same thickness of the cement board. Sand panels are more adaptive to heating expanding and drying constriction, the finish faces are never cracked.</p> <p>Almost all of the panels are natural inorganic, free of formaldehyde, benzene and other harmful emissions, laboratory testing is lower than 1/10 of the national standard. After installation, it is equal to or better than the highest level of latex paint or wallpaper, which means that you could stay in immediately.</p> <p>The material has neutral PH value. Due to natural feature of sand, this material is not water, acid and alkali soluble. Laboratory testing freeze-thaw cycle 25 times, simulated 25 years of extreme cold and heat cycle (a cycle: all immersion in water, frozen below 0 °C, thawing, heating to high temperature), the material strength is not less than 99% of the original strength.</p> <p>The sound absorption coefficient is optimized by graded particle size. The laboratory achieves different porosity through the ratio of sand particles with different sizes, and the optimum sand gradation with high sound absorption coefficient is finally determined by nearly a thousand experiments. The gradation is one of the core technologies of acoustical sand panels.</p>
	Coat	3mm		
Surfaces density	Substrate	9kg/m ²	/	
	Coat	4.5kg/m ²		
Rupture strength		7.6MPa	≥1.0MPa	
Compressive strength		29.7MPa	≥10MPa	
Pound strength		5.2kJ/m ²	/	
Nail-holding ability		>690 N	/	
Combustion class		A2	A2	
TVOC emission		<0.062 mg	≤0.5 mg	
Freezing and thawing cycle 25 times		>99%	≥90%	
Sound absorption coefficient		0.50~0.85	NRC≥0.5	

Technique parameters			No.	SYB	
Design		Check	Approval	Page	02

Construction instruction

1 Arrival of materials

There are three types of materials:

1.1 Base board: plate, thickness 6mm, size 300X600, carton packaging;

1.2 Base material: For base plaster, including sand and slurry. Using paper bags and plastic transparent buckets for package separately. Paper bags identified as "base sand", transparent buckets identified as "base slurry." Base material is the original sand color;

1.3 Coat material: For coating, divided into troweling and spraying types, and cannot be mixed, including sand and slurry, Using paper bags and plastic transparent buckets for package separately. Paper bags identified as "troweling coat sand", For the trowel-type coat, or "spraying coat sand" for the spray-type coat; plastic bucket identified as "troweling coat slurry" for the trowel-type coat, or "spraying coat slurry" for the spray-type coat. Coat material is rich in color, including white, black, or other colors.

2 Base board installation

2.1 First step is installing the frame (steel frame or wood frame), frame spacing is set to 300mm.

2.2 Base board is first point glued with silicon glue to the frame (with a layer of mesh fabric) for plaster. Then, the base board is fixed to the frame with screws, each board should use 6 nails. In order to prevent cracking, the base board should be drilled holes at the nail locations. When using wooden frame, air nail can be allied and each plate should be more than 12 nails.

2.3 Base board plastering. After the installation of a large area of the substrate, the frame connection or board patch work may be uneven, which can be sanded and smoothed by sandpaper or the panel scrap.

2.4 Panel cutting: Marble saw and angle grinder can be used to cut and trim. The most convenient way is using wallpaper knife. Using the wallpaper knife to cut out a line as mark and cut off the mesh, and then the board can be easily broken by hand.

3 Base plaster

3.1 Mix the base sand and base slurry of the base material. One bag of base sand matching one bag of base slurry. After mixing, stir it evenly.

3.2 Using a spatula for plastering on the wall or ceiling. Base plaster is the key to the final effect, which must be smooth. Scraper or other auxiliary tools can be used to improve the smoothness of the completion of the surface.

3.3 Under normal circumstances, the base plaster recommended scraping about 2-3mm thickness, and should also be placed into a layer of mesh fabric to enhance the integrity and crack resistance. If in serious uneven substrate, may be appropriate to improve the scraping thickness, the thickest requirements shall not exceed 12mm.

3.4 conventional temperature, humidity, well-ventilated building on the ground, base plaster drying time is about 12-24h. In the basement and other poor ventilation, or high humidity conditions in the south, the drying time may be extended (there are examples of relative humidity of 90% or more in the basement, the drying time is 72-96h). Allows slight grinding after drying of the base plaster.

3.5 The sand particles gradation is a professional sound-absorbing formulation that forms a breathable and permeable sandstone layer with 130 million pores per square meter. Therefore, in order to prevent the plugging of the pores caused by sound absorption failure, the slurry shall not add any other additives, the completion of the surface shall not be applied to any non-product surface with any other paint.

3.6 very special circumstances, the slurry allowed to try to add a small amount of water on site to improve the different workers habits, the general amount of water for per bag should not exceed 2% of the sand weight.

3.7 Note: After the completion of the construction of base plaster, it is required to be surface smooth, edge straight to ensure the coat plaster or coat spray decorative effect.

Construction instruction (1)			No.	SYB
Design	Check	Approval	Page	03

4 Coat construction

4.1 There are two kinds of coating, which are troweled smooth coat and spray textured coat.

4.2 The sand and slurry for troweling and spray coat are different, absolutely cannot be mixed.

4.3 Take a clean bucket, first poured into the slurry, and then the sand. Then stir with the mixer until forming into paste.

5 Trowel construction

5.1 Use a spatula to wipe the paste on the wall or base plaster. The effect of the coat layer is the final effect of the construction, which should be treated with caution, and strive to perfect.

5.2 recommended troweling more than twice, each thickness is about 1mm, the total coat plaster thickness should be controlled at 2-3mm.

5.3 conventional temperature, humidity, well-ventilated building on the ground, base plaster drying time is about 12-24h. In the basement and other poor ventilation, or high humidity conditions in the south, the drying time may be extended (there are examples of relative humidity of 90% or more in the basement, the drying time is 72-96h). Allows slight grinding after drying of the base plaster.

5.4 The sand particles gradation is a professional sound-absorbing formulation that forms a breathable and permeable sandstone layer with 130 million pores per square meter. Therefore, in order to prevent the plugging of the pores caused by sound absorption failure, the slurry shall not add any other additives, the completion of the surface shall not be applied to any non-product surface with any other paint.

5.5 very special circumstances, the slurry allowed to try to add a small amount of water on site to improve the different workers habits, the general amount of

water for per bag should not exceed 2% of the sand weight.

5.6 Note: After the completion of the construction of base plaster, it is required to be surface smooth, edge straight to ensure the coat plaster or coat spray decorative effect.

6 Spray constructoin

6.1 Spray the sprayed paste onto the wall or base plaster using a conventional paint spray gun. The effect of the coat layer is the final effect of the construction, which should be treated with caution, and strive to perfect.

6.2 recommended troweling more than twice, each thickness is about 1mm, the total coat plaster thickness should be controlled at 2-3mm.

6.3 conventional temperature, humidity, well-ventilated building on the ground base plaster drying time is about 12-24h. In the basement and other poor ventilation, or high humidity conditions in the south, the drying time may be extended (there are examples of relative humidity of 90% or more in the basement, the drying time is 72-96h). Allows slight grinding after drying of the base plaster.

6.4 The sand particles gradation is a professional sound-absorbing formulation that forms a breathable and permeable sandstone layer with 130 million pores per square meter. Therefore, in order to prevent the plugging of the pores caused by sound absorption failure, the slurry shall not add any other additives, the completion of the surface shall not be applied to any non-product surface with any other paint.

6.5 very special circumstances, the slurry allowed to try to add a small amount of water on site to improve the different workers habits, the general amount of water for per bag should not exceed 2% of the sand weight.

6.6 Note: After the completion of the construction of base plaster, it is required to be surface smooth, edge straight to ensure the coat decorative effect.

Construction instruction (2)								No.	SYB
Design			Check			Approval		Page	04

7 Tools, technology , maintenance and clean

7.1 Construction tools: wallpaper knife, hand drill, mixer, trowel, scraper and so on. If spray: air pump (air pressure 0.8Mpa, outlet> 1.0m³ / min) + paint gun

7.2 frame leveling: frame must be leveling, otherwise the board cannot be flat, and will cause the extraneous plaster or spray.

7.3 installation board: In order to facilitate the board flat, while strengthening the installation strength, should be point glued on the frame with silicone adhesive. Can be installed by screw or air nail.

1) Screw mounting. Applicable to steel frame, woodenframe and so on. Board should be punched holes first. Acoustic sand panels are made of silicon-based polymerization, which makes it similar to the brittle of glass (also silica).If screws are direct tapped, the board may burst. Each panel should be drilled with at least six M2.5 screws.

2) Air nail installation. Applicable to wood frame, can be installed directly. Each air nail should be at least 20-30mm long.

3) board installation: should keep the flatness of the board, if found local deformation protrusion, sandpaper or angle grinder can be used.

7.4 Base plaster: the base material mixed well. In the bucket first into the base layer of pulp, then, into the base material. Use the mixer to stir evenly to form the paste. Seam treating first. Then apply the layer of mesh fabric, while troweling sand. The thickness troweled base plaster should be controlled under 2-3mm. In the process of plastering, 120 mesh sandpaper or panel scrap can be used to polish.

7.5 spray layer: Using the spray sand and slurry, and then stir as 7.4.recommended spraying more than twice, each thickness is about 1mm, the total coat plaster thickness should be controlled at 2-3mm.The spray coat Should

completely cover the base plaster.

7.6 trowelingcoat: Usingtrowelingsand and slurry, and then stir as 7.4. recommended troweling more than twice, each thickness is about 1mm, the total coat plaster thickness should be controlled at 2-3mm.Typical drying time is 12-24 hours. High level of construction workers can be smooth to achieve beautiful requirements. In the process of plastering, 120 mesh sandpaper or panel scrap can be used to polish.

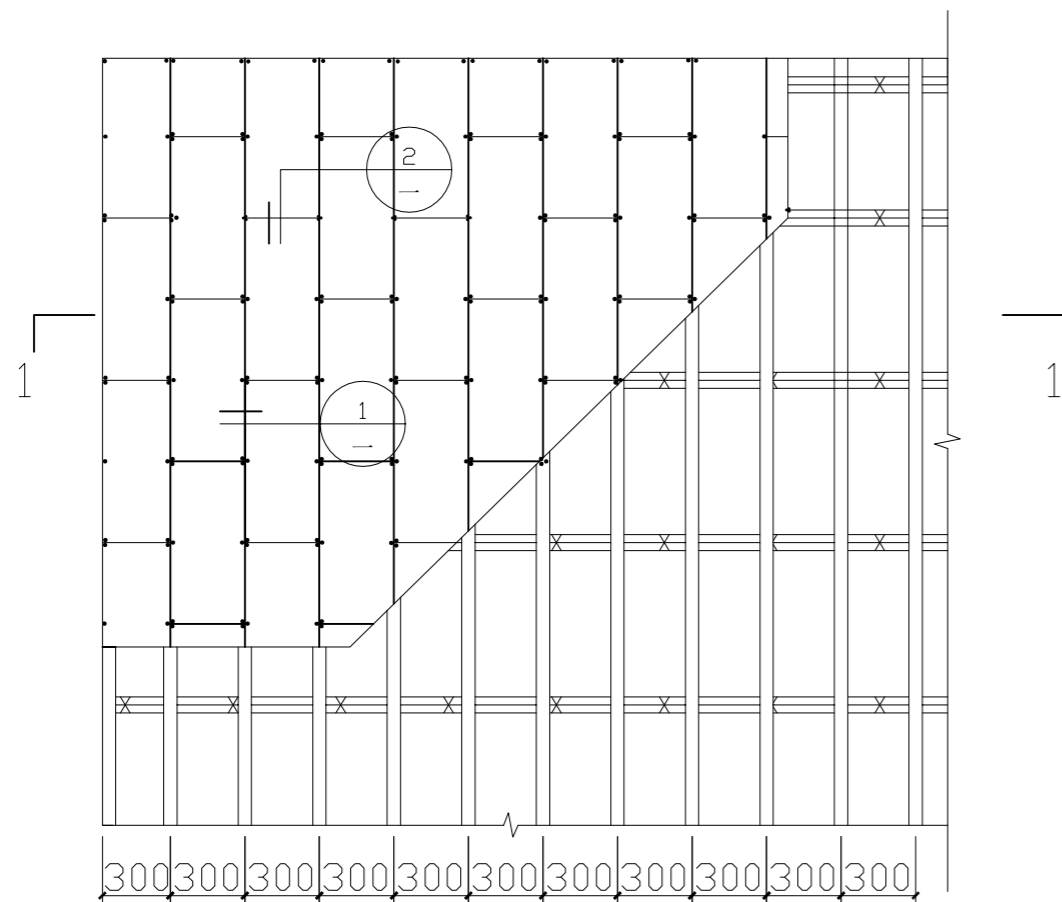
7.7 Note:

- 1) The screws must be punched.
- 2) One bag of sand matching one bag of slurry, no additive slurry or water.
- 3) Slurry first poured, then sand poured in to bucket.
- 4) Scraper must be used to ensure the flatness of the base plaster.

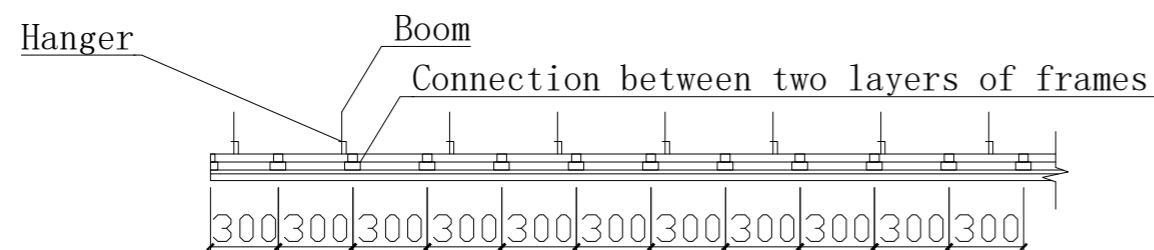
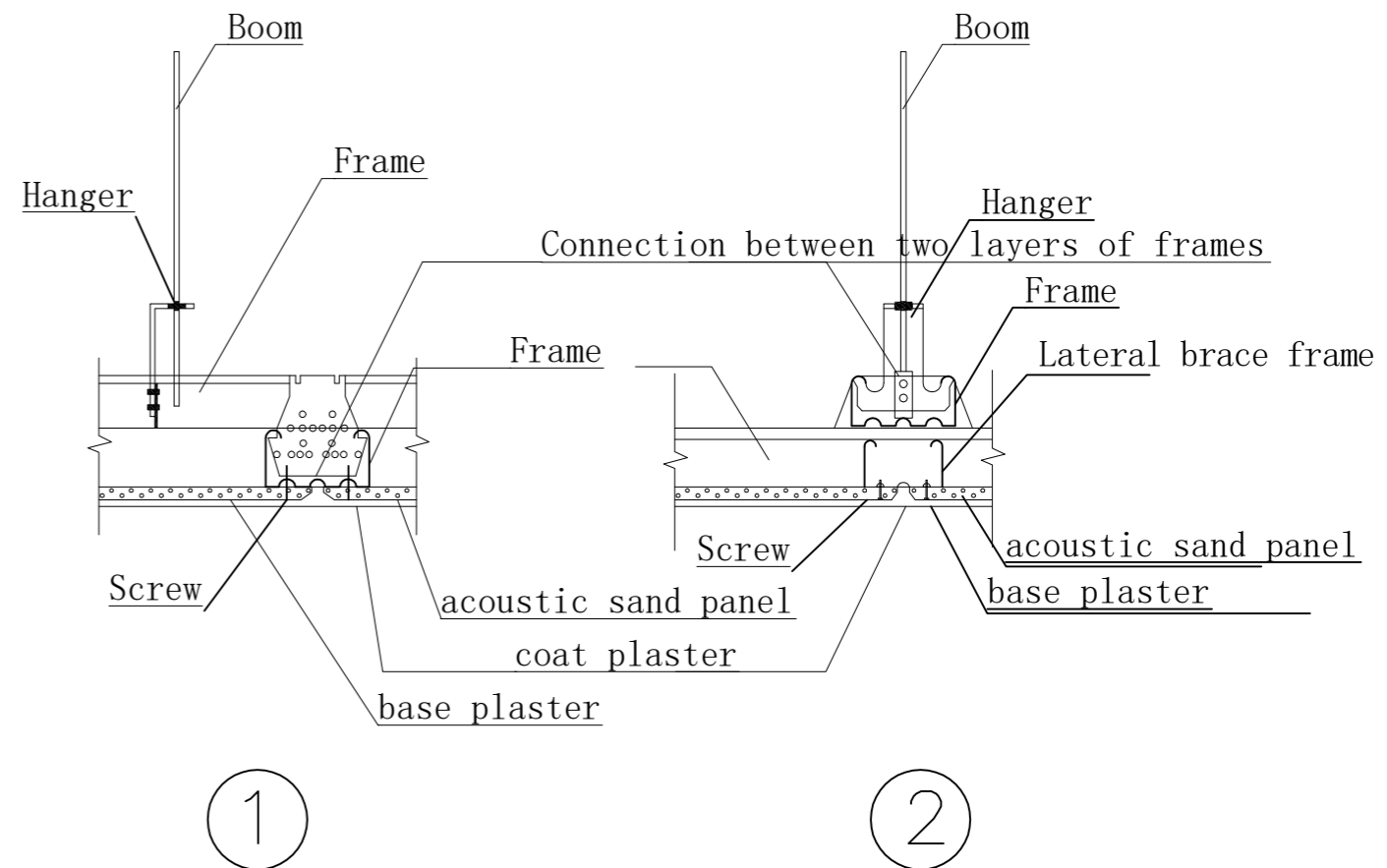
7.8 Maintenance and cleaning

- 1) collision avoidance: try to avoid sharp objects impact. Oncestroked, additional plaster or spray is necessary.
- 2) dust avoidance: try to avoid indoor dust to prevent surface pores blocked, aesthetic downgraded. After construction, pay attention to finished coat protection.
- 3) anti-stains: should prevent oil, water pollution into the surface pores, affecting the surface beautiful. In particular, prevent handprint of the electrical switch box installation (should require electricians to use white gloves), and avoid splashing of polluted water when clean the skirting.
- 4) cleaning: for dust, air pump can blow dust. Slightly stains, can be gently wiped with a clean wet cloth. Note: no heavy wiping to prevent surface scratch which may degrade aesthetics.

Construction instruction (3)								No.	SYB
Design			Check			Approval		Page	05



double frame Up view

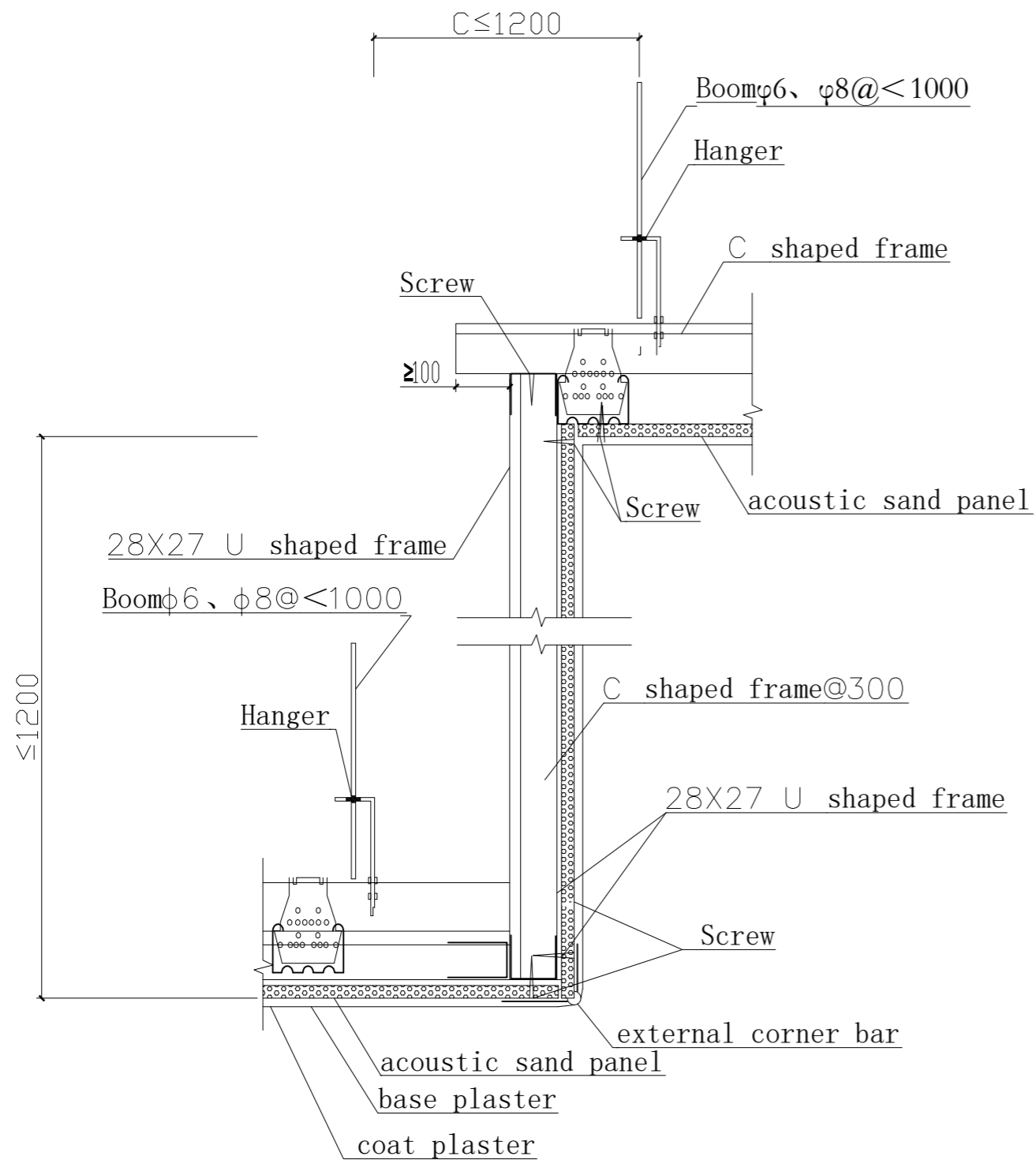


1-1 Section

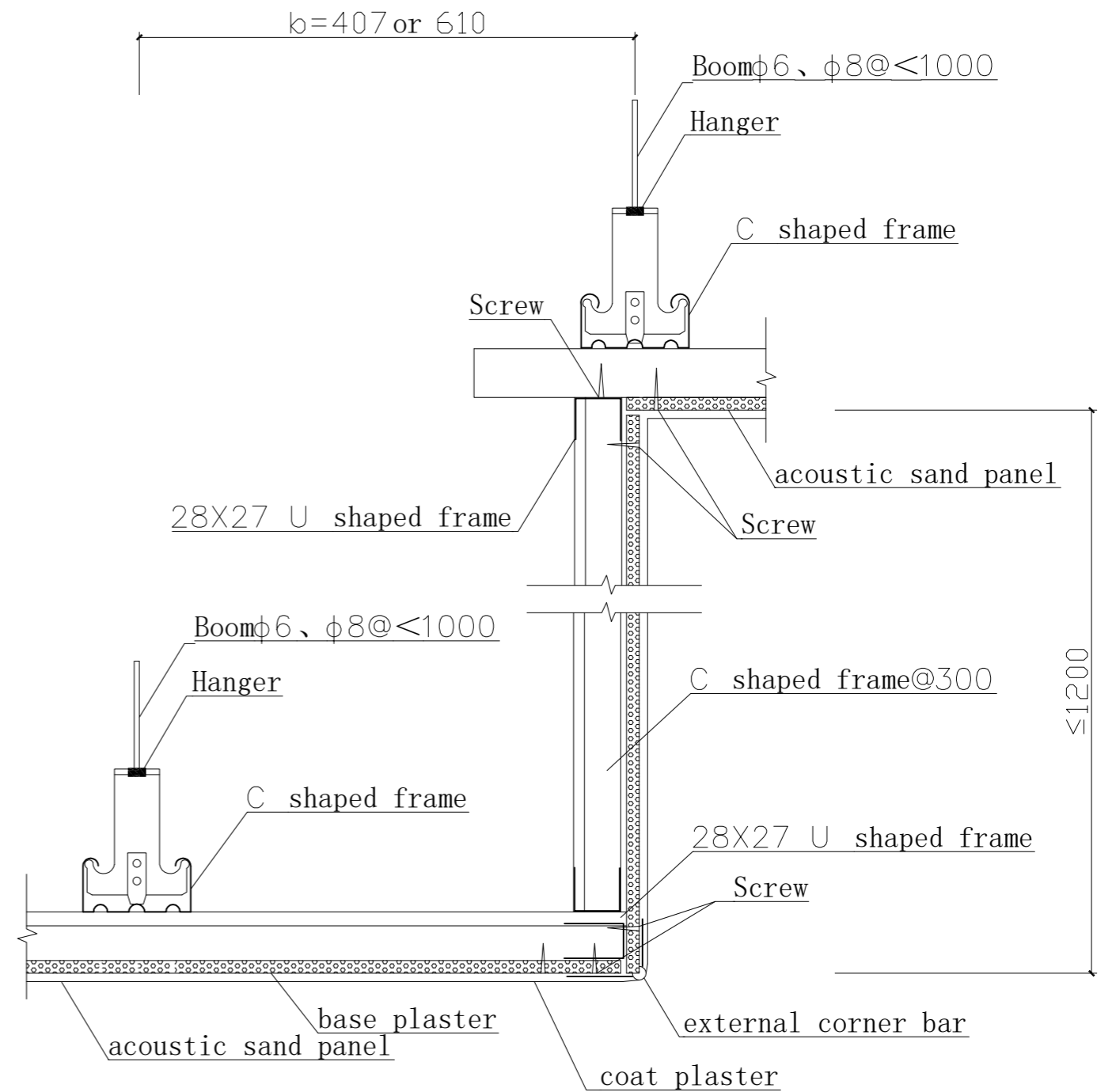
Note: Double frame system is for suspended ceilings larger than 50 m², wider than 4m and deeper than 450mm whether it is capable to bear human body weight or not.

Each acoustical sand panel is point glued and then fixed by 6 screws.

Frame details for ceiling				No.	SYB
DESIGN	CHECK	APPROVAL	PAGE	06	

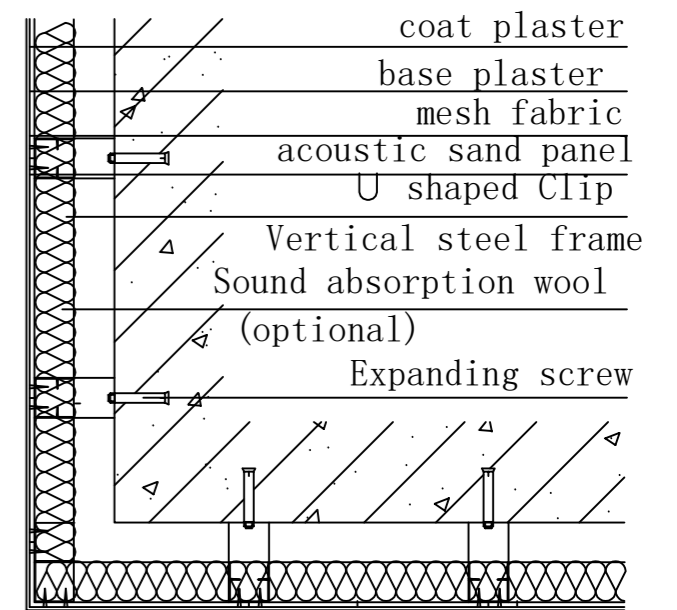
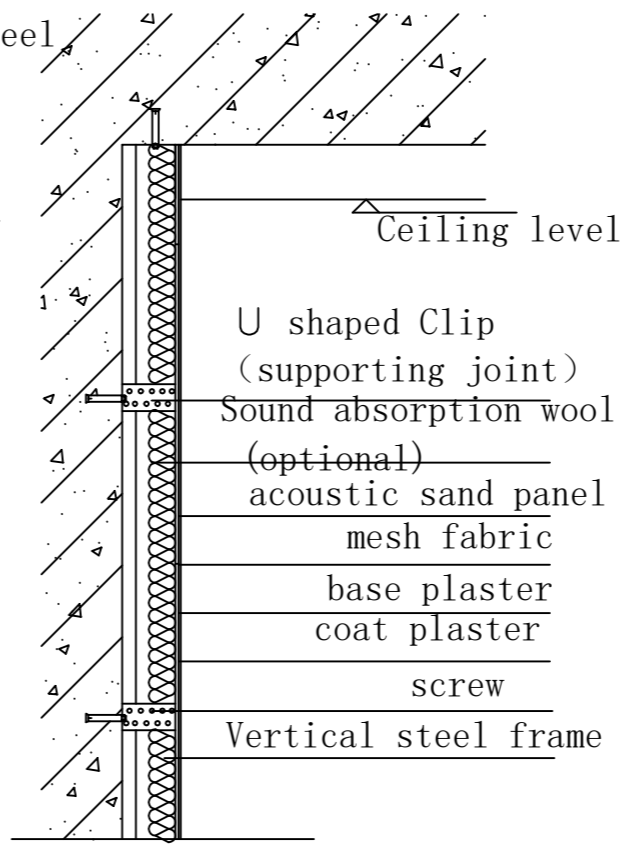
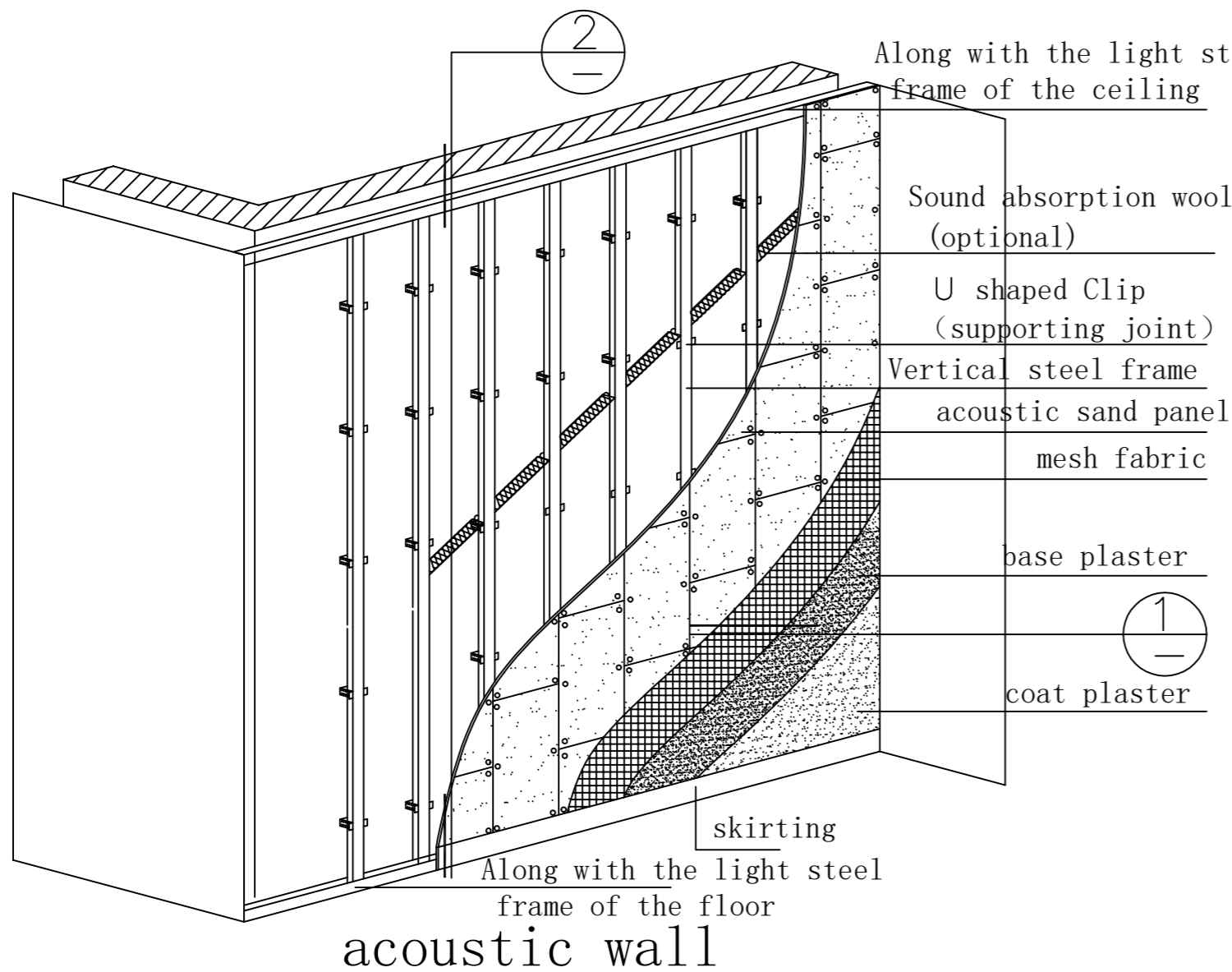


① double frame ceiling
Cascade frame details

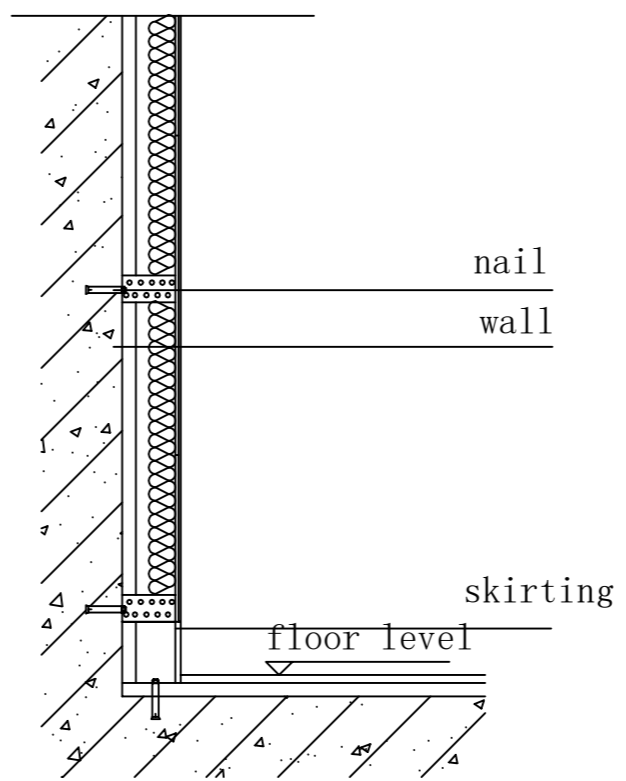


② double frame ceiling
Cascade frame details

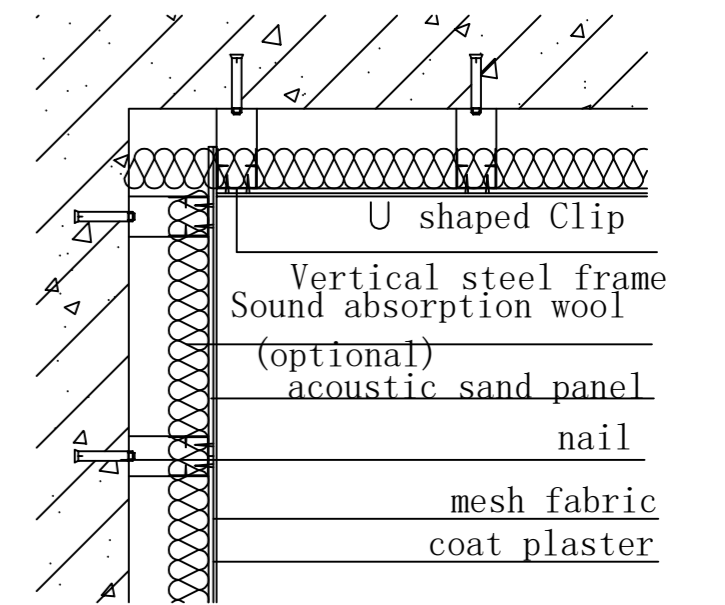
double frame ceiling Cascade frame details				No.	SYB
DESIGN	CHECK	APPROVAL	PAGE	07	



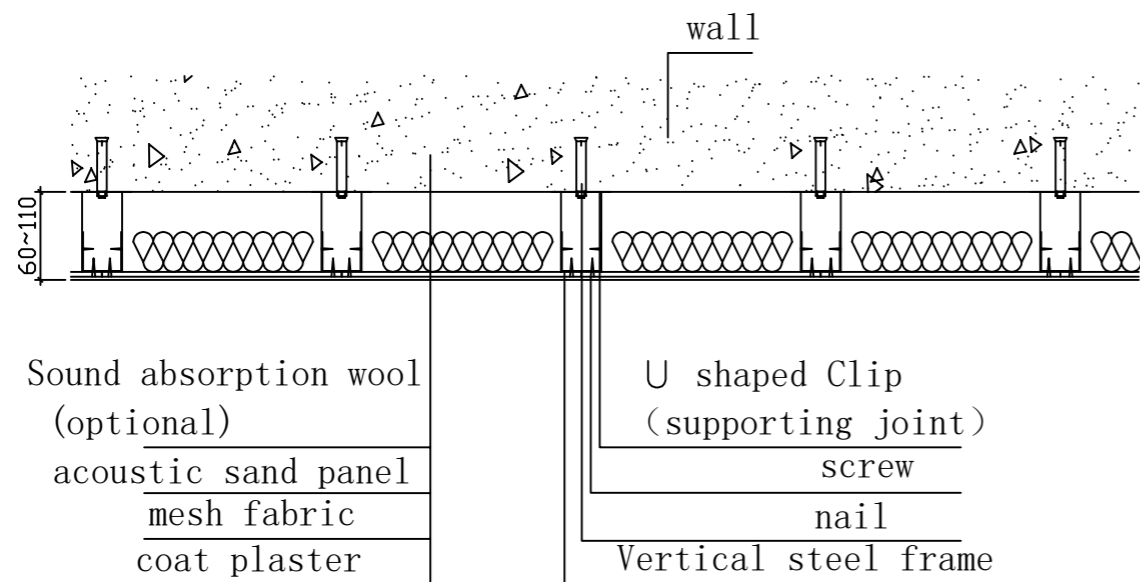
③ External corner



②



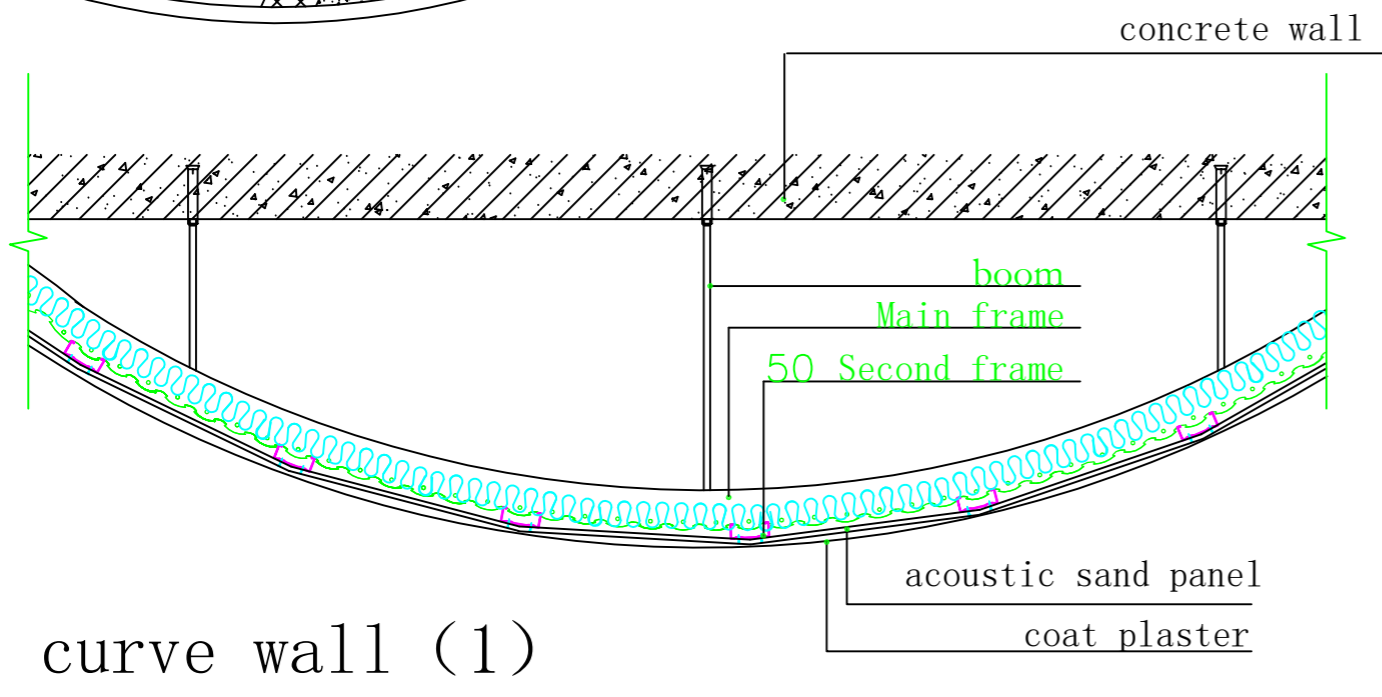
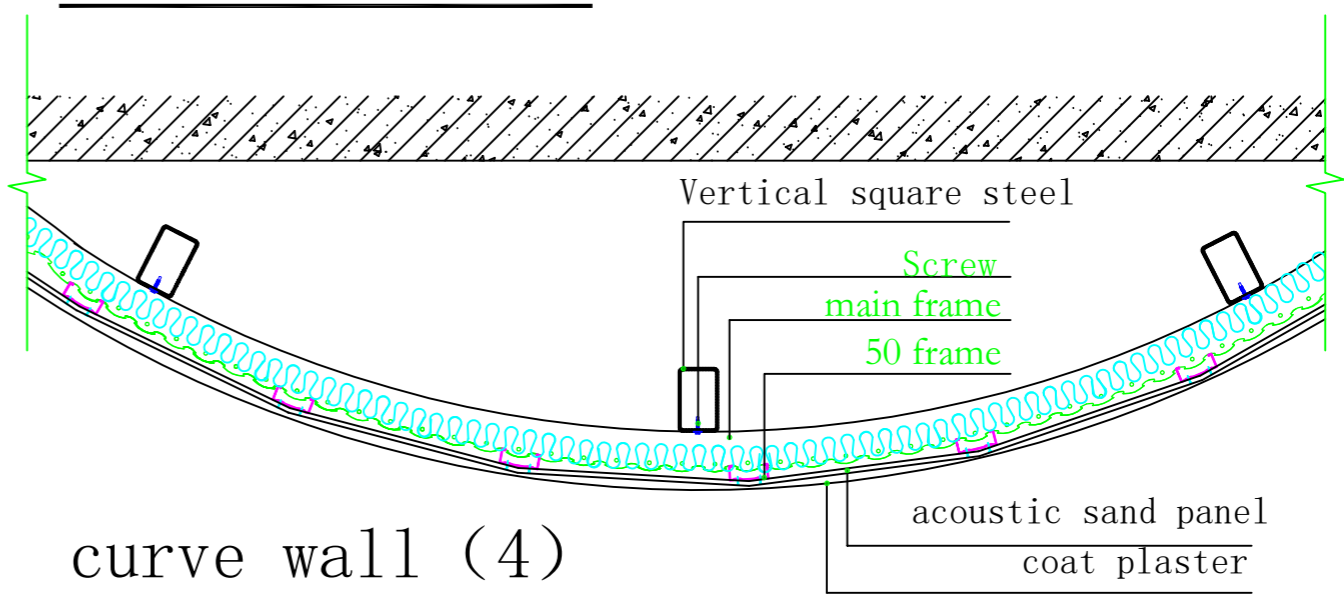
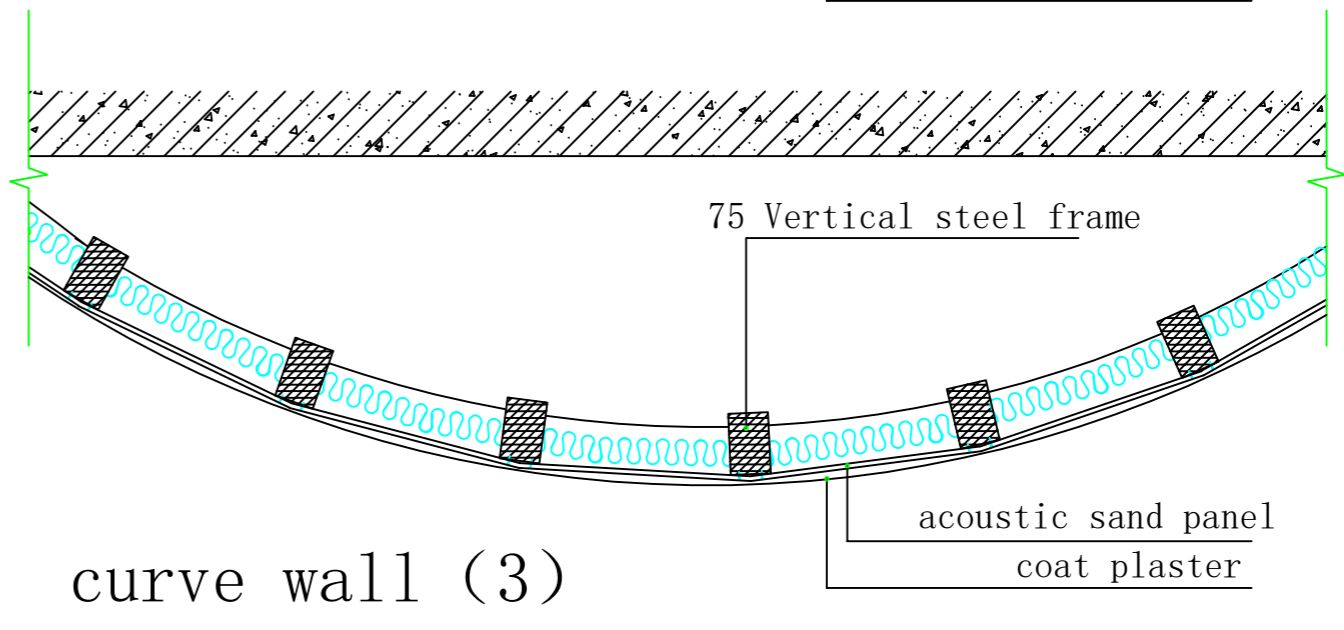
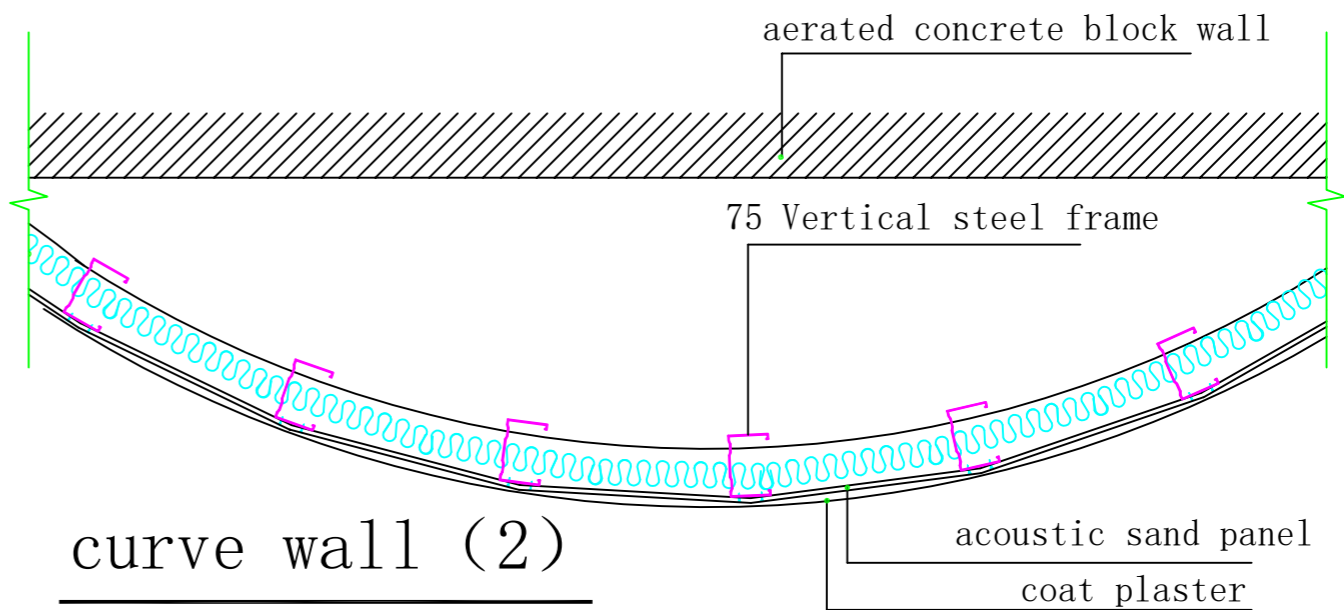
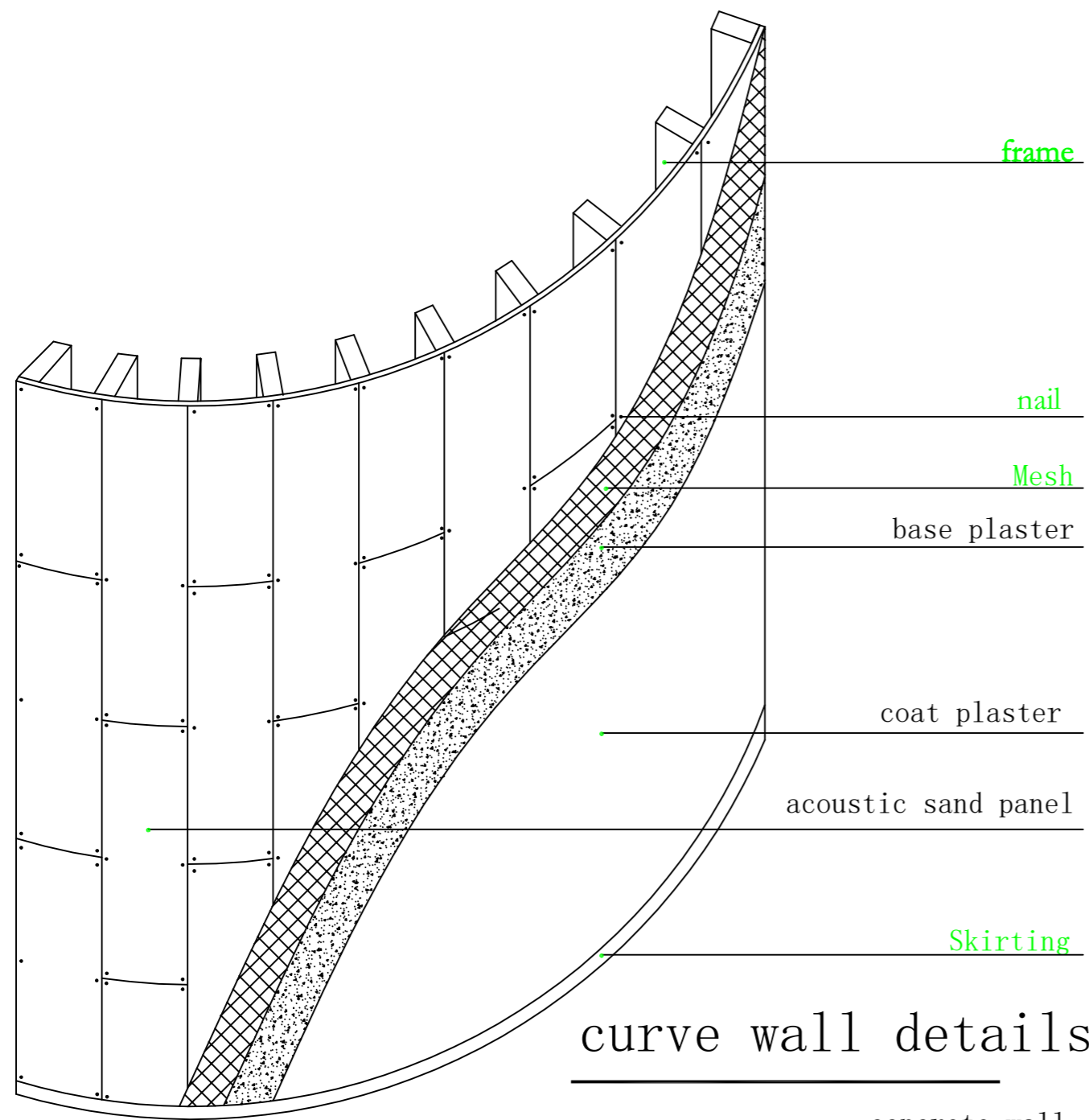
④ Internal corner



①

NOTE:
 1、Acoustical sand panels should be point glued before connected to the frame
 2、Each acoustical sand panel is point glued and then fixed by 6 self-threading screws

light steel frame acoustic wall			No.	SYB
DESIGN	CHECK	APPROVAL	PAGE	15



acoustic curve wall				No.	SYB
DESIGN	CHECK	APPROVAL		PAGE	21